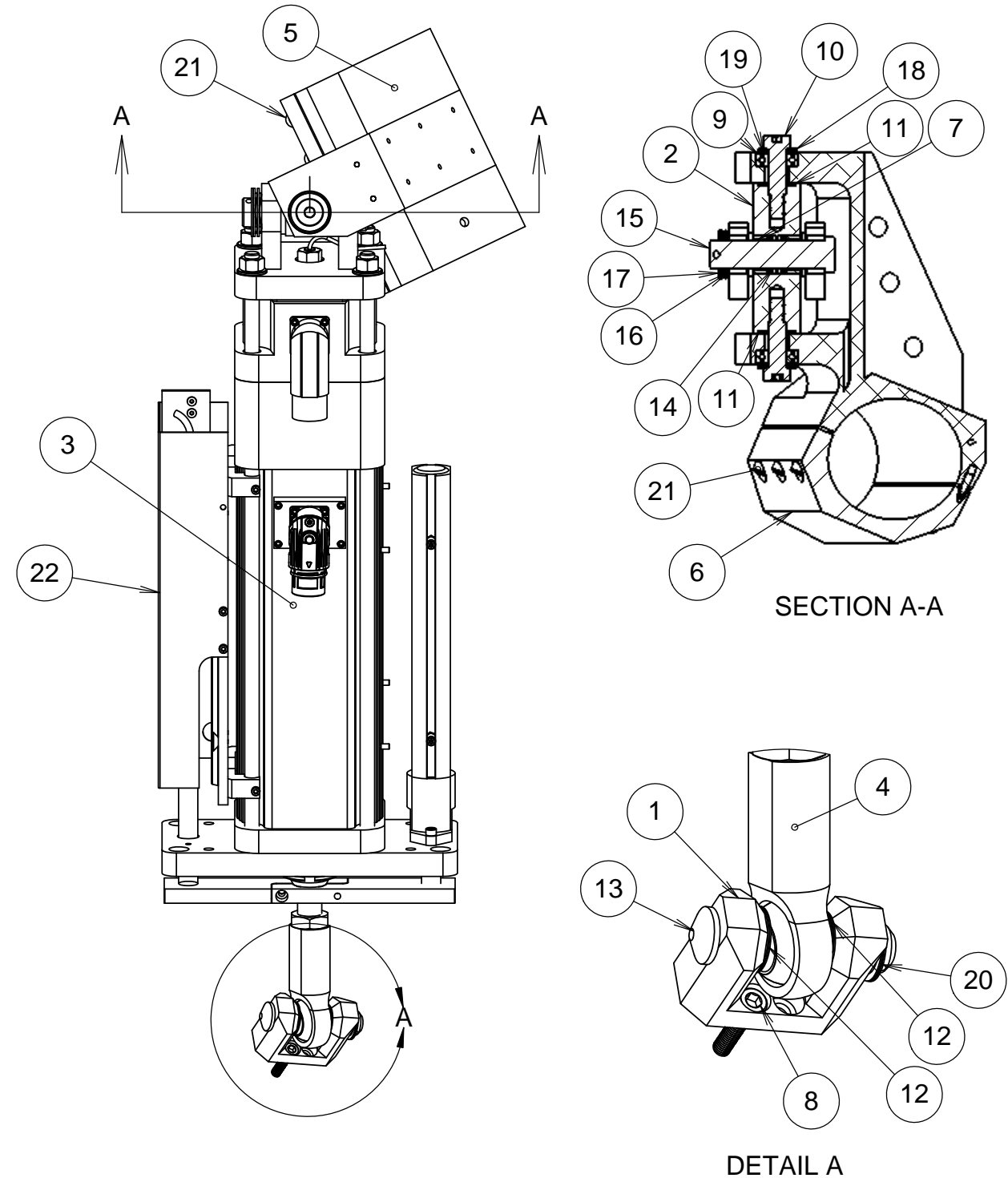


ITEM NO.	PartNo	DESCRIPTION	QTY.
1	872-LM1201	LINEAR ACTUATOR PIVOT BASE	1
2	872-LM1202	U-JOINT CROSS	1
3	EXLAR GSX40-0601-ICA-GA1-1B8-04-RB-AX-L3-LT-64359, LINEAR ACTUATOR	LINEAR ACTUATOR, EXLAR	1
4	MC 2988K371	ROD END	1
5	872-LM1302 UPPER SWING ARM ATTACHMENT CLAMP B	UPPER SWING ARM ATTACHMENT CLAMP B	1
6	872-LM1204	LOWER SWING ARM ATTACHMENT CLAMP	1
7	mc_87235K11_polyurethane_sleeve	POLURETHANE SLEEVE, .8 INCH	2
8	MC 93705A846	SHCS M6x25MM	2
9	MC 6661K840 BALL BEARING	BALL BEARING, 12MM ID	2
10	MC 92981A405 SHOULDER SCREW 12MM SHOULDER	SOCKET HEAD SHOULDER SCREW 12MM	2
11	MC_1262N120_thrust_washer_12mm	THRUST WASHER, 12mm	2
12	MC_98089A352_shim_16mmshaft_.5mmthick	Shim, 16mmshaft, .5mm thick	5
13	872-LM1205	MODIFIED CLEVIS PIN	1
14	mc 2418T142_o-ring_1inch OD	O-RING 1 INCH OD	2
15	MC_92401A287_316 STAINLESS STEEL CLEVIS PIN_.75diameter	STAINLESS STEEL CLEVIS PIN .75 INCH DIAM.	1
16	MC_9714K590_WAVE DISC SPRING	WAVE DISC SPRING	2
17	MC_96853A128 shim_washer_.77id_1.25od	SHIM, .77 INCH ID, 1.25 INCH OD	3
18	MC_9712K770_HIGH-CARBON STEEL BELLEVILLE DISC SPRING	HIGH-CARBON STEEL BELLEVILLE DISC SPRING	2
19	MC_90214A428_SHIM_12MM ID_.5MMTHK	SHIM_12MM ID_.5MMTHK	6
20	mc_93574A865_shim_.687id_.5mm thick	SHIM, .687 ID, .5MM THICK	3
21	MC_SHCS_M6X35_91290A202	SHCS M6X35 BLACK OXIDE	10
22	872-LM1319	Actuator Absolute Encoder Assembly	1

REVISIONS				
REV	DATE	DRW'N	CHCK'D	DESCRIPTION
A	20JUL16	CR	--	INITIAL RELEASE
B	19NOV18	CR		ADDED ABSOLUTE ENCODER ASSY



NOTES

1. APPLY LOCTITE TO ALL THREADED FASTENERS UPON FINAL ASSEMBLY
2. ALL SCREWS SHOULD BE TIGHTENED TO APPROPRIATE TORQUE LEVELS
3. USE APPROPRIATE COTTER PIN FOR ITEM 6, NONE SHOWN IN ASSEMBLY DRAWING
4. MAINTAIN ORDER OF THRUST WASHERS AND SPACERS SPECIFIED IN 872-LTN1041

UNLESS OTHERWISE NOTED DIMENSIONS ARE IN INCHES & TOLERANCES ARE AS FOLLOWS

X.X: ±0.1000" X.XX: ±0.0100"
 X.XXX: ±0.0050" X.XXXX: ±0.0001"
 ANGLES: ±0.5° FINISH: 125 MICRO INCHES
 BREAK ALL SHARP EDGES
 & CORNERS .002" MAX

MATERIAL FINISH
PARTS LIST



DRAWN	CRATLIFF	7/20/16	KECK 1 DEPLOYABLE TERTIARY MIRROR
CHECKED	--	--	STOW AND DEPLOY SYSTEM
DESIGNED	RATLIFF	--	TITLE
ENGINEER	RATLIFF	--	ACTUATOR AND ATTACHMENTS B
SW DOCUMENT FILE			PROJECT CODE K1DM3
			DWG NO 872-LM-0000
			872-LM1300
			B 1/1