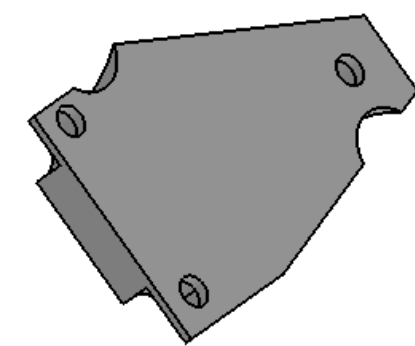
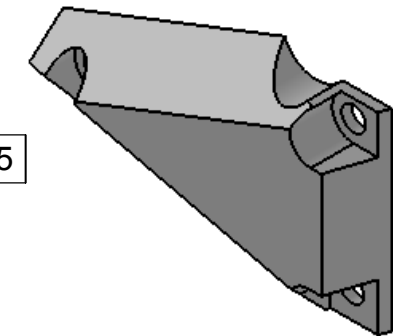
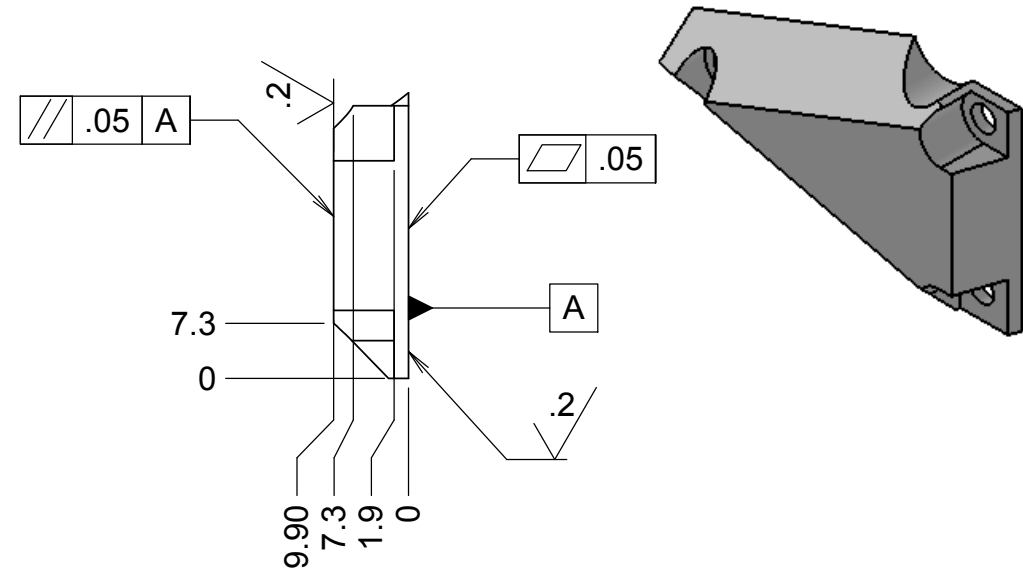
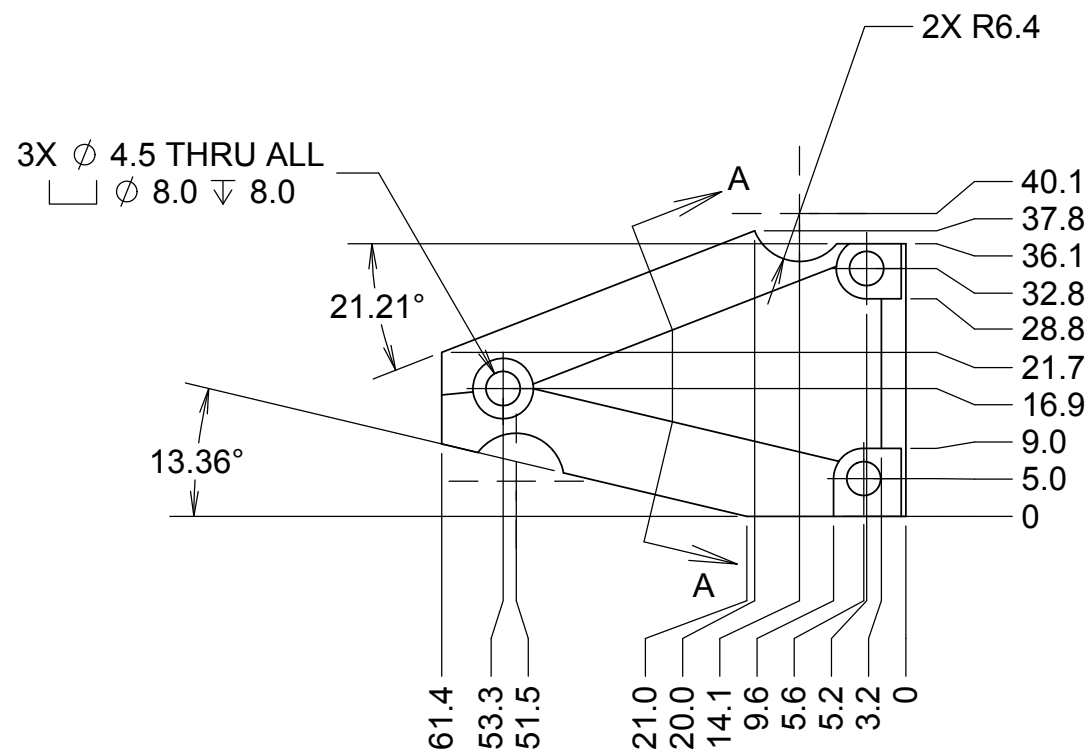
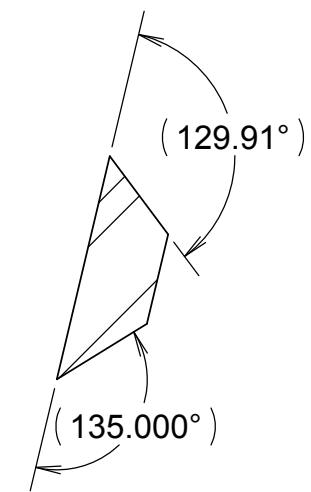


REVISIONS				
DRWN	DATE	CHK'D	REV	DESCRIPTION
CR	20MAY16		A	PRELIMINARY RELEASE



NOTES:
 1. MATERIAL: 440C SERIES STAINLESS STEEL HRC 59 MIN

UNLESS OTHERWISE NOTED DIMENSIONS ARE IN MILLIMETERS & TOLERANCES ARE AS FOLLOWS:
 X.X: ± 0.10 mm X.XX: ± 0.01 mm
 ANGLES: $\pm 0.5^\circ$ FINISH: 3 MICRONS (μ m)
 BREAK ALL SHARP EDGES & CORNERS .25mm MAX



DRAWN C. RATLIFF	
CHECKED J. WARD	
DESIGNED C. RATLIFF	5/18/16
ENGINEER C. RATLIFF	5/18/16
SW DOCUMENT FILE 872-LM2206.SLDPRT	QUANTITY 1

PROJECT CODE K1D3FD		DWG NO 872-LM2206
TITLE SWING-ARM HINGE, V BLOCK		REV A
NEXT ASSY KDM2100		1/1

MATERIAL SEE NOTE 1	FINISH --
------------------------	--------------