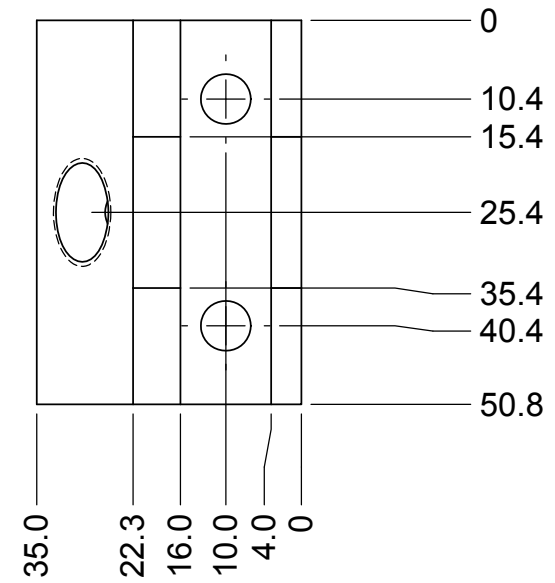
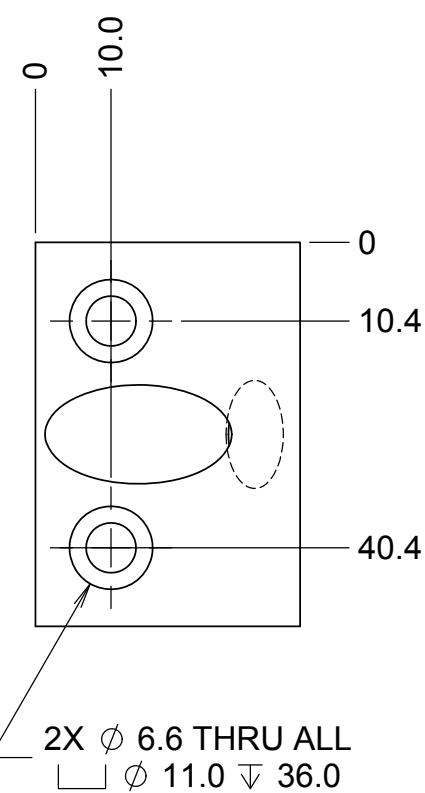
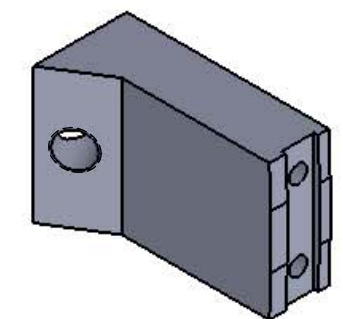
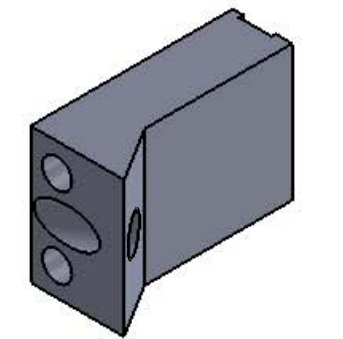
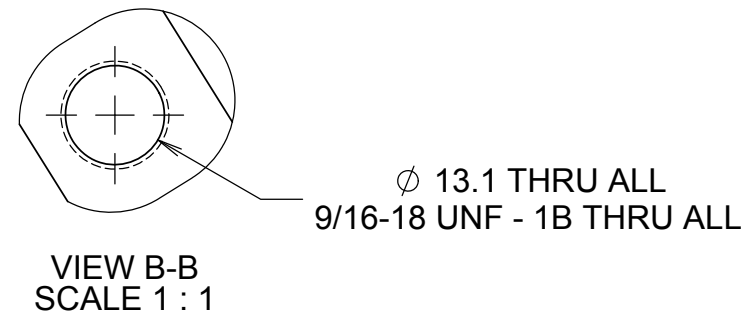
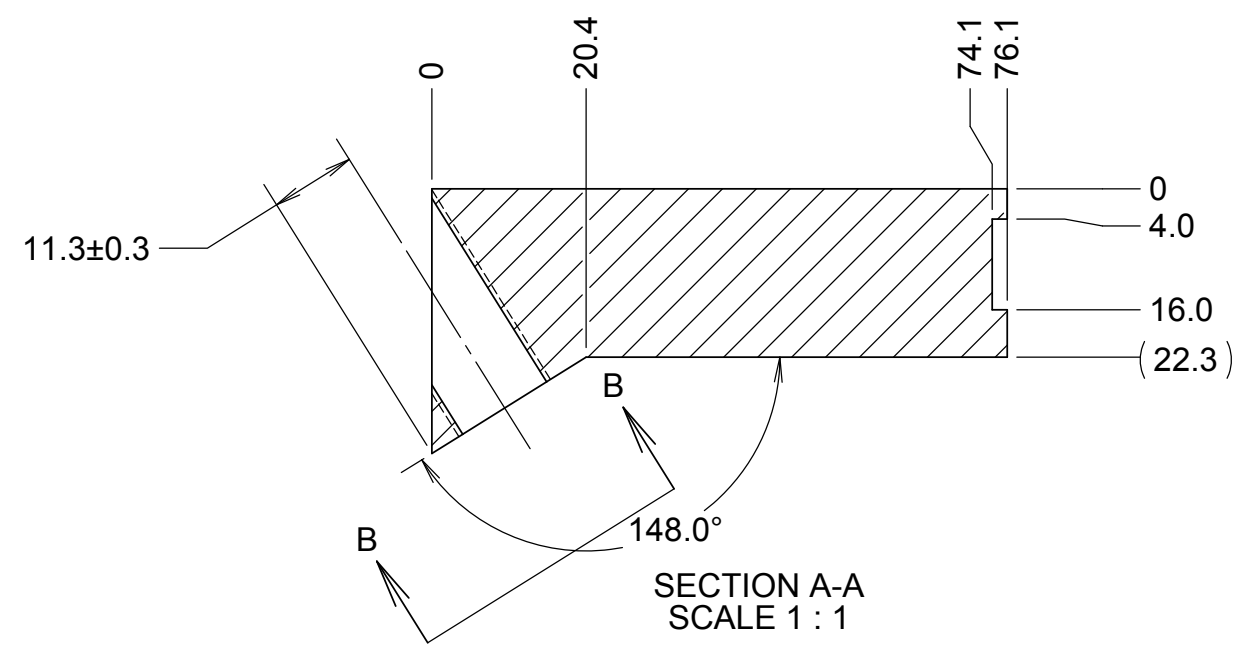


REVISIONS				
DRWN	DATE	CHK'D	REV	DESCRIPTION
CR	24MAY16		A	PRELIMINARY RELEASE



- NOTES:
- MATERIAL: 300 SERIES STAINLESS STEEL
 - 554 RADIUS CENTER POINT IS ALIGNED TO A-A SECTION LINE, 20MM FLAT BETWEEN RADII IS TO IMPROVE STABILITY WHEN MOUNTED TO ID OF HINGE

UNLESS OTHERWISE NOTED DIMENSIONS ARE IN MILLIMETERS & TOLERANCES ARE AS FOLLOWS: X.X: ±0.10 mm X.XX: ±0.01 mm ANGLES: ±0.5° FINISH: 3 MICRONS (µm) BREAK ALL SHARP EDGES & CORNERS .25mm MAX			DRAWN C. RATLIFF CHECKED J. WARD	KECK 1 DEPLOYABLE TERTIARY MIRROR ROTARY SUPPORT STRUCTURE	
MATERIAL SEE NOTE 1	FINISH --		DESIGNED C. RATLIFF ENGINEER	5/24/16 5/24/16	TITLE HINGE LVDT MOUNT
			SW DOCUMENT FILE 872-LM2208.SLDPRT	QUANTITY 1	PROJECT CODE K1D3FD NEXT ASSY KDM2000
				DWG NO 872-LM2208	REV A 1/1