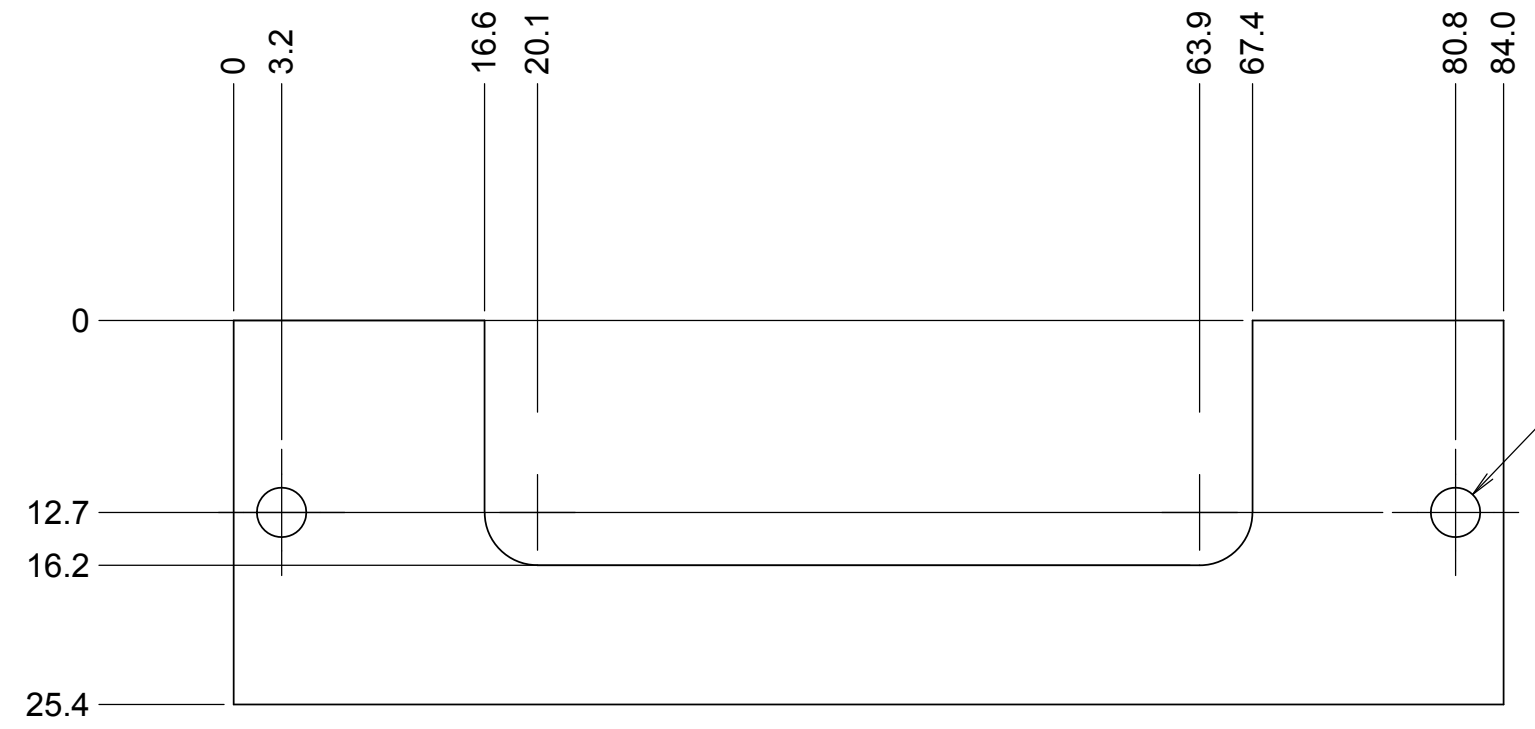
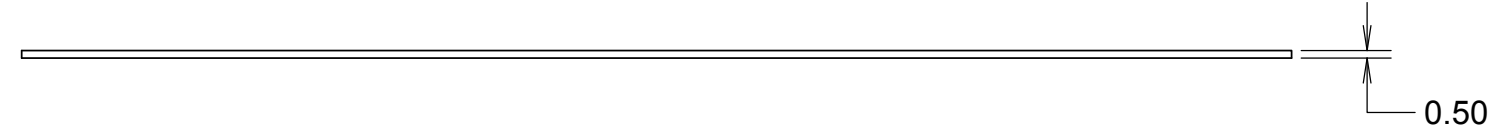
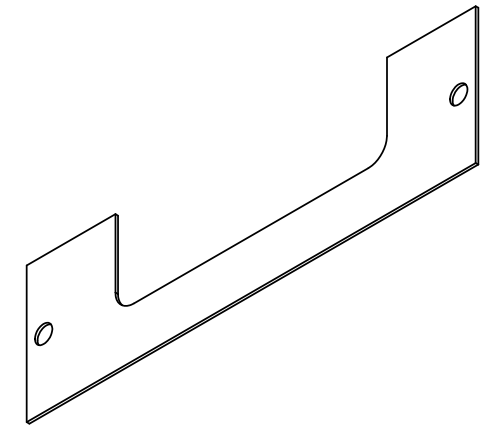


REVISIONS				
DRWN	DATE	CHK'D	REV	DESCRIPTION
CR	4OCT16		A	PRELIMINARY RELEASE



2X  $\phi$  3.26 THRU ALL



NOTES:  
1. MATERIAL: STAINLESS STEEL SHIM STOCK

UNLESS OTHERWISE NOTED DIMENSIONS ARE IN MILLIMETERS & TOLERANCES ARE AS FOLLOWS: X.X: ±0.10 mm X.XX: ±0.01 mm ANGLES: ±0.5° FINISH: 3 MICRONS (µm) BREAK ALL SHARP EDGES & CORNERS .25mm MAX			DRWN <b>C. RATLIFF</b>	PROJECT CODE K1D3FD	DWG NO 872-LM2222	REV A
MATERIAL SEE NOTE 1	FINISH		DESIGNED <b>J. WARD</b>	DATE 10/4/16	TITLE STAINLESS SHIM FOR CONTACTS	QUANTITY TBD
			ENGINEER <b>C. RATLIFF</b>	DATE 10/4/16	PROJECT CODE K1D3FD	REV A
			SW DOCUMENT FILE 872-LM2222.SLDPRT	DATE 10/4/16	PROJECT CODE KDM2218	REV A