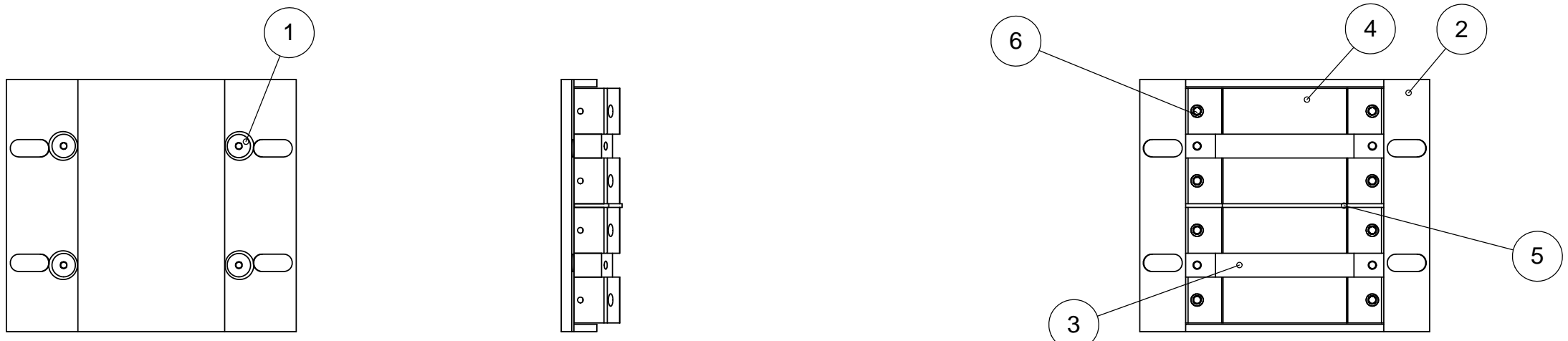



ITEM NO.	PartNo	DESCRIPTION	QTY.
1	MC 92210A108	FLAT HEAD SOCKET SCREW	4
2	872-LM2211	48V DELRIN BACKING PLATE	1
3	872-LM2213	48V DELRIN BLOCK	2
4	872-LM2225	48V COPPER CONTACT	4
5	872-LM-2221	Mylar Insulator	1
6	MC_92313A188	SOCKET HEAD SET SCREW 8-32 X 1/8"	8

REVISIONS				
REV	DATE	DRW'N	CHCK'D	DESCRIPTION
A	5OCT16	CR	--	INITIAL RELEASE



**NOTES**

1. QUANTITY: 4
2. ENSURE COUNTERSUNK SCREWS ARE RECESSED WITHIN DELRIN MOUNT SURFACES, FINAL ASSEMBLY WITH LOCTITE

UNLESS OTHERWISE NOTED DIMENSIONS ARE IN INCHES & TOLERANCES ARE AS FOLLOWS X.X: ±0.1000" X.XX: ±0.0100" X.XXX: ±0.0050" X.XXXX: ±0.0001" ANGLES: ±0.5° FINISH: 125 MICRO INCHES BREAK ALL SHARP EDGES & CORNERS .002" MAX			DRAWN <b>C.RATLIFF</b>	--	PROJECT CODE <b>K1D3FD</b>	DWG NO <b>872-LM-2223</b>	<table border="1"> <tr> <td>A</td> <td>1/1</td> </tr> </table>	A	1/1
A	1/1								
<b>PARTS LIST</b>	FINISH <b>NA</b>	CHECKED <b>J WARD</b> DESIGNED <b>CR&amp;JW</b> ENGINEER SW DOCUMENT FILE	--	TITLE <b>48V INNER DRUM CONTACT ASSEMBLY</b>	NEXT ASSY --				