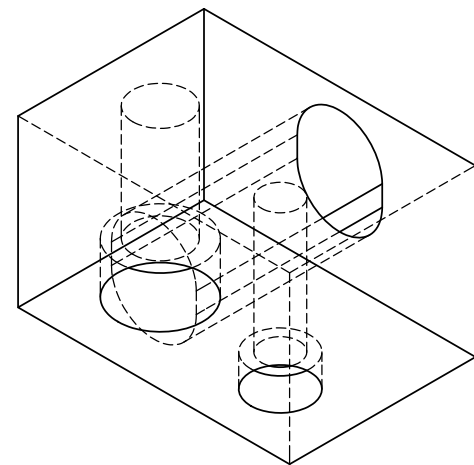
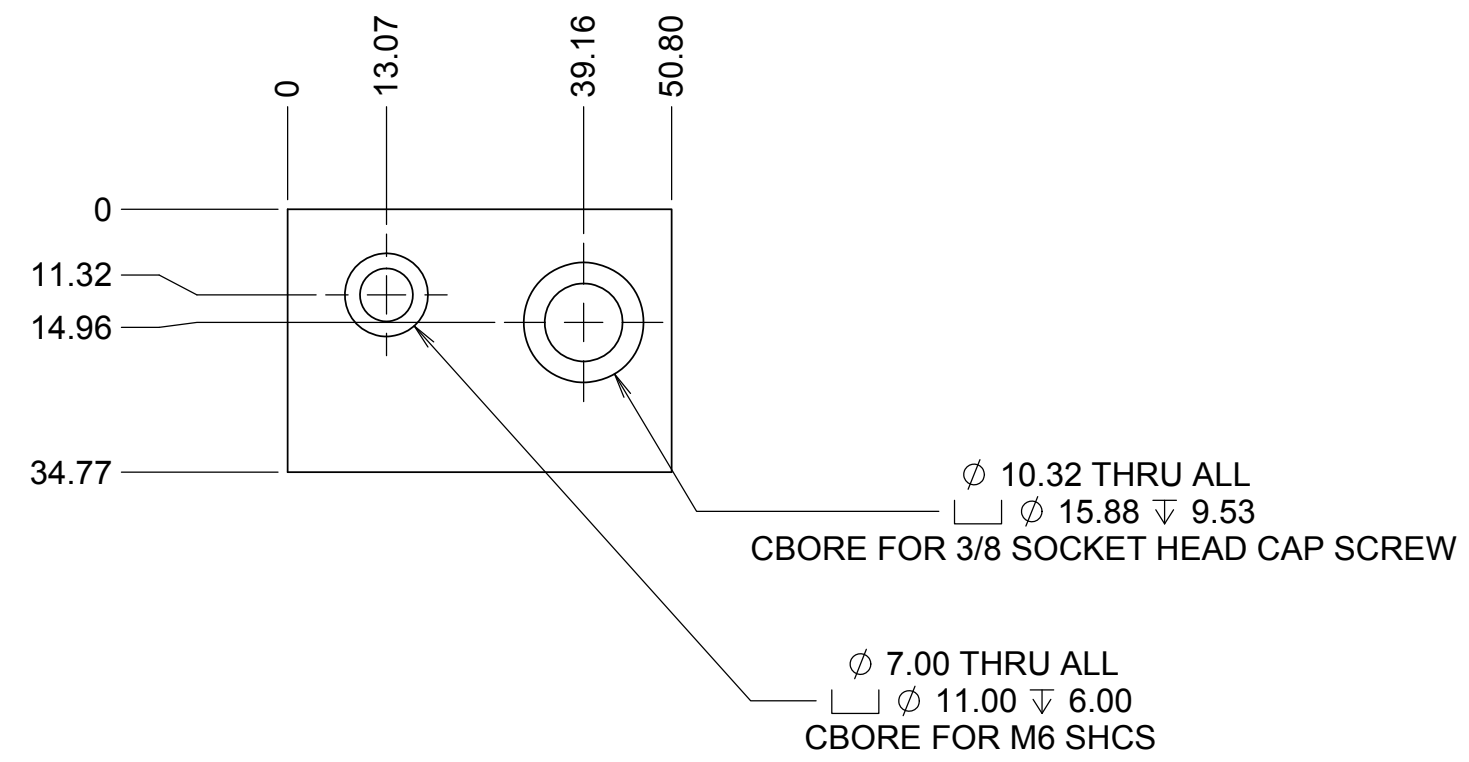
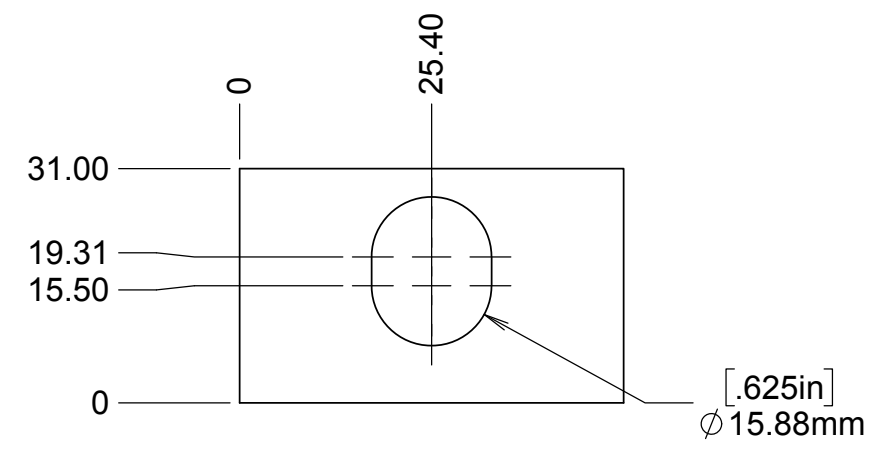
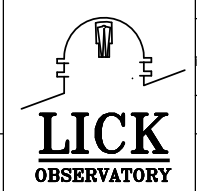


REVISIONS				
DRWN	DATE	CHK'D	REV	DESCRIPTION
CR	6OCT17		A	PRELIMINARY RELEASE
CR	21DEC2017		B	SLOTTED HOLE



- NOTES**
- CAD MODEL FILENAME, 872-LM2260 Ring Gear Pin Block
 - MATERIAL: 6061 T6 ALUMINUM
 - BREAK ALL SHARP EDGES
 - PAINT BLACK WITH BEST KNOWN METHODS AFTER FIT CHECK

UNLESS OTHERWISE NOTED DIMENSIONS ARE IN MILLIMETERS & TOLERANCES ARE AS FOLLOWS:
 X.X: ±0.10 mm X.XX: ±0.05 mm
 ANGLES: ±0.5° FINISH: 3 MICRONS (µm)
 BREAK ALL SHARP EDGES & CORNERS .25mm MAX



DESIGNED C. RATLIFF ENGINEER	CHECKED DM	QUANTITY 1	PROJECT CODE K1D3FD	DWG NO 872-LM0000	REV B
SW DOCUMENT FILE 872-LM2260 Ring Gear Pin Block			TITLE RING GEAR PIN BLOCK		
MATERIAL SEE NOTES		FINISH		NEXT ASSY 872-LM0000	
UNLESS OTHERWISE NOTED DIMENSIONS ARE IN MILLIMETERS & TOLERANCES ARE AS FOLLOWS: X.X: ±0.10 mm X.XX: ±0.05 mm ANGLES: ±0.5° FINISH: 3 MICRONS (µm) BREAK ALL SHARP EDGES & CORNERS .25mm MAX			KECK 1 DEPLOYABLE TERTIARY MIRROR INNER DRUM		
			872-LM2260		