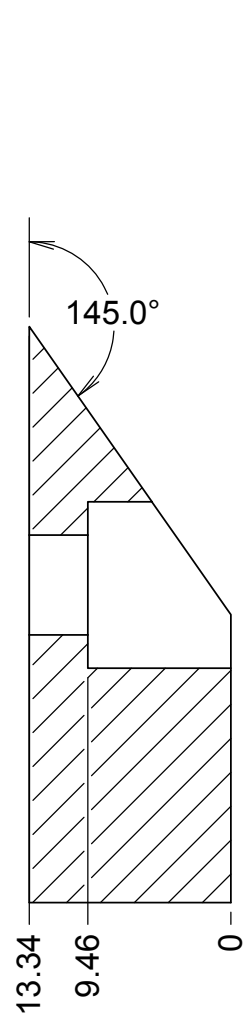
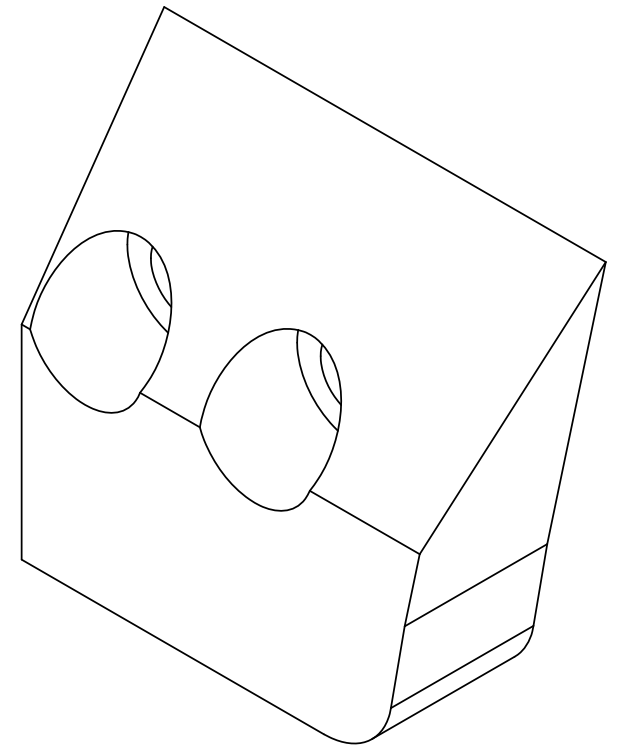
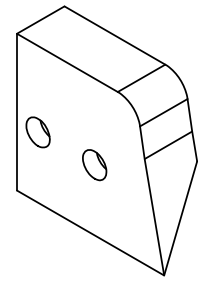
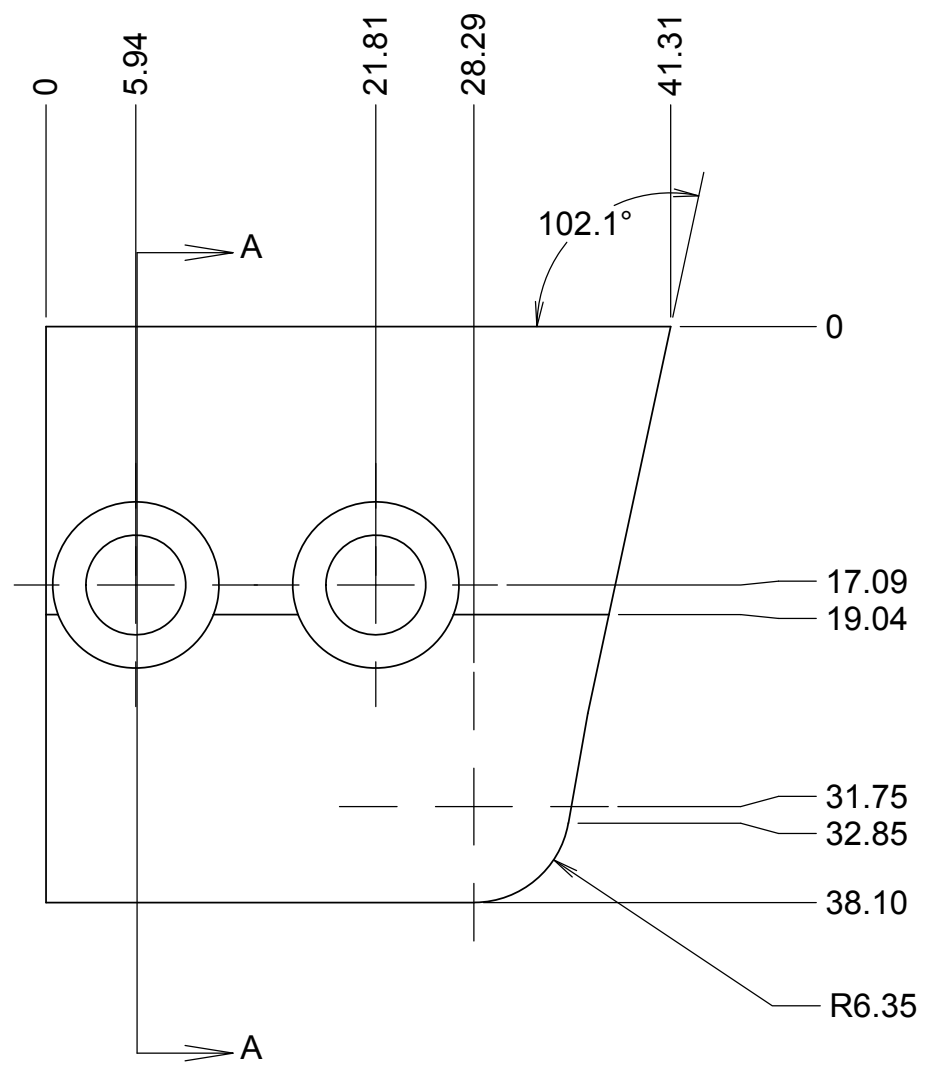


REVISIONS				
DRWN	DATE	CHK'D	REV	DESCRIPTION
CR	10OCT17		A	INITIAL RELEASE
CR	29NOV17		B	REMOVED MATERIAL, DEEPER C-BORES



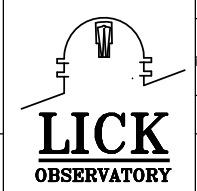
SECTION A-A  
SCALE 2 : 1



**NOTES**

- 1 CAD MODEL FILENAME, 872-LM2264 SWING ARM GUIDE PART C
- 2 MATERIAL: BLACK DELRIN
3. BREAK ALL SHARP EDGES
4. USE OLD PART TO MAKE NEW ONE

UNLESS OTHERWISE NOTED DIMENSIONS ARE IN MILLIMETERS & TOLERANCES ARE AS FOLLOWS:  
 X.X: ±0.10 mm X.XX: ±0.05 mm  
 ANGLES: ±0.5° FINISH: 3 MICRONS (µm)  
 BREAK ALL SHARP EDGES & CORNERS .25mm MAX



DRAWN <b>C. RATLIFF</b> CHECKED <b>DM</b>	TDB	<b>KECK 1 DEPLOYABLE TERTIARY MIRROR</b>	
DESIGNED <b>C. RATLIFF</b> ENGINEER	NA	<b>INNER DRUM</b>	
SW DOCUMENT FILE 872-LM2264 SWING ARM GUIDE PART C		QUANTITY <b>1</b>	PROJECT CODE <b>K1D3FD</b> NEXT ASSY 872-LM0000
MATERIAL SEE NOTES		FINISH	DWG NO <b>872-LM2264</b>
			REV <b>B</b> 1