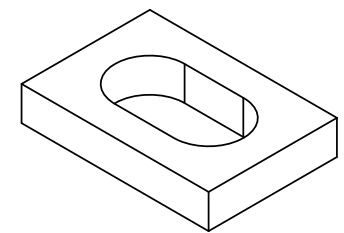
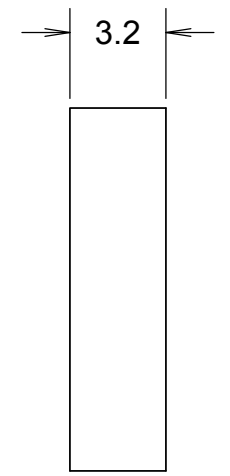
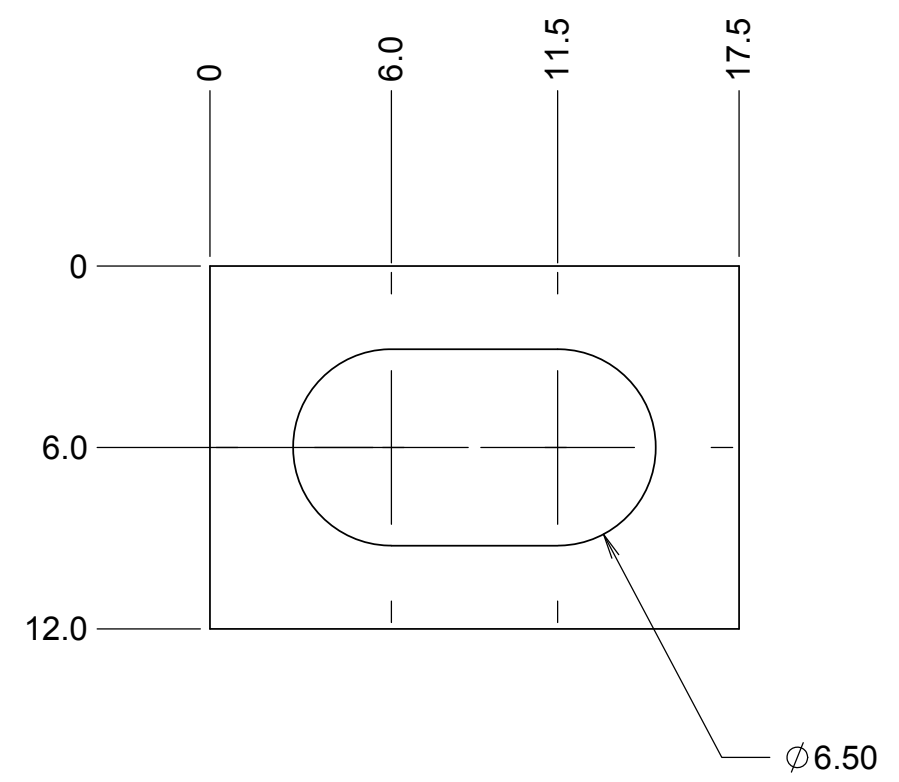
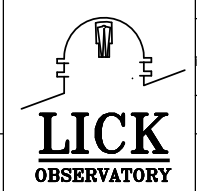


REVISIONS				
DRWN	DATE	CHK'D	REV	DESCRIPTION
CR	15NOV17		A	PRELIMINARY RELEASE



- NOTES**
- CAD MODEL FILENAME, 872-LM2270 switch ramp washer plate
  - MATERIAL: 300 SERIES STAINLESS STEEL
  - BREAK ALL SHARP EDGES

UNLESS OTHERWISE NOTED DIMENSIONS ARE IN MILLIMETERS & TOLERANCES ARE AS FOLLOWS:  
 X.X:  $\pm 0.10$  mm X.XX:  $\pm 0.05$  mm  
 ANGLES:  $\pm 0.5^\circ$  FINISH: 3 MICRONS ( $\mu\text{m}$ )  
 BREAK ALL SHARP EDGES & CORNERS .25mm MAX



DRAWN <b>C. RATLIFF</b>		KECK 1 DEPLOYABLE TERTIARY MIRROR	
CHECKED <b>DM</b>	TBD	INNER DRUM	
DESIGNED <b>C. RATLIFF</b>	NA	TITLE SWITCH RAMP WASHER PLATE	
ENGINEER		PROJECT CODE K1D3FD	DWG NO 872-LM2270
MATERIAL SEE NOTES	FINISH	SW DOCUMENT FILE 872-LM2270A switch ramp washer plate	QUANTITY <b>4</b>
		NEXT ASSY 872-LM0000	REV <b>A</b>

8 7 6 5 4 3 2 1

D  
C  
B  
A

D  
C  
B  
A

8 7 6 5 4 3 2 1