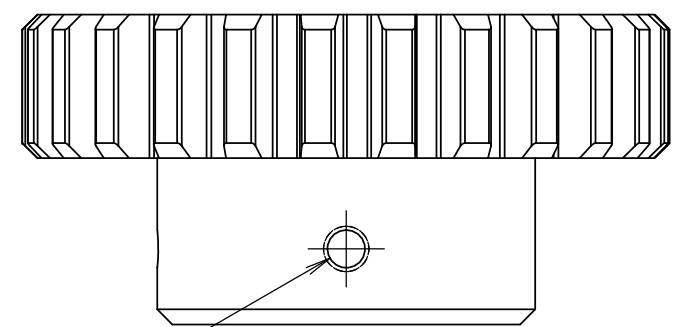


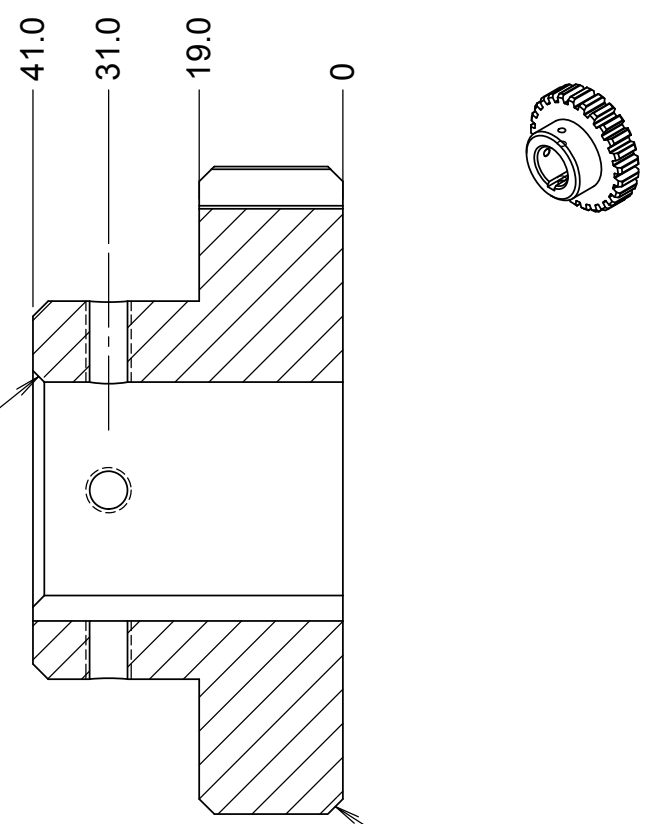
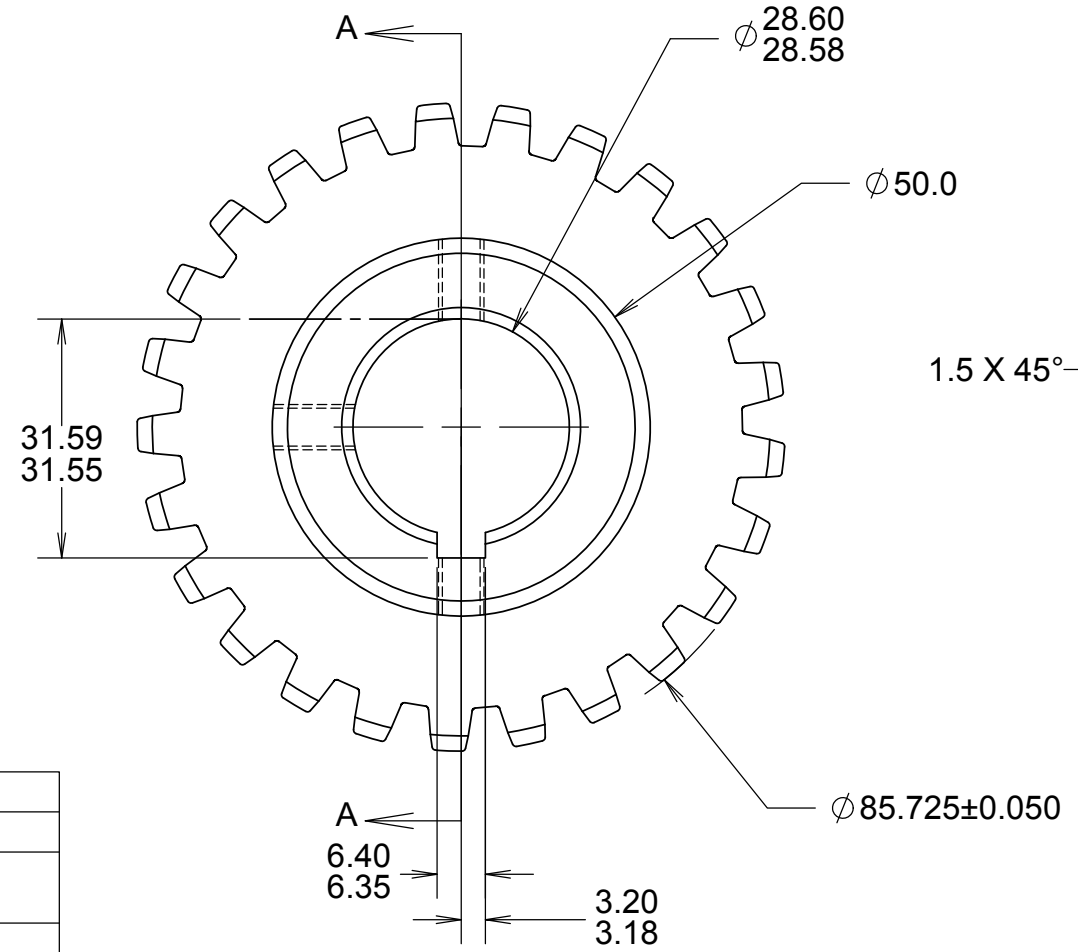
8 7 6 5 4 3 2 1

REVISIONS				
DRWN	DATE	CHK'D	REV	DESCRIPTION
CR	23MAY16		A	PRELIMINARY RELEASE
CR	31MAY16		B	ADDED MORE TAPPED HOLES



3X ϕ 5.0 THRU ALL
M6X1.0 - 6H THRU ALL

GEAR DATA	
TOOTH FORM	FULL DEPTH INVOLUTE
ADDENDUM	3.175
WHOLE DEPTH	7.1
MODULE	3.175
PRESSURE ANGLE	20 DEG
PITCH DIAMETER	79.375
NUMBER OF TEETH	25
FACE WIDTH	19
TOOTH SURFACE HARDNESS	250-300 BHN
TOOTH CORE HARDNESS	250-300 BHN
TOOTH FINISH	1.6
INTENTIONAL BACKLASH	NONE
AGMA CLASS	8



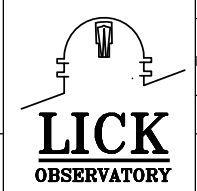
SECTION A-A
SCALE 1 : 1

GEAR TOLERANCE (PER AGMA 390.32)	
RADIAL RUNOUT	0.13
TOOTH TO TOOTH SPACING	0.05
LEAD ERROR ACROSS THE FACE	0.03
PROFILE TOLERANCE	0.15
LEAD VARIATION (PARALLELISM) ACROSS THE FACE	0.01

NOTES:

- GEOMETRIC TOLERANCES AND DIMENSIONS PER ASME Y14.5-2009
- MATERIAL: AISI-4130, GEAR TO MEET HARDNESS REQUIREMENTS SPECIFIED IN GEAR DATA BLOCK
- BREAK ALL SHARP EDGES

UNLESS OTHERWISE NOTED DIMENSIONS ARE IN MILLIMETERS & TOLERANCES ARE AS FOLLOWS:
 X.X: ± 0.10 mm X.XX: ± 0.01 mm
 ANGLES: $\pm 0.5^\circ$ FINISH: 3 MICRONS (μ m)
 BREAK ALL SHARP EDGES & CORNERS .25mm MAX



DESIGNED C. RATLIFF	5/23/16	PROJECT CODE K1D3FD	DWG NO 872-LM3130	REV B
CHECKED J. WARD				
ENGINEER C. RATLIFF	5/23/16	TITLE GEAR, HARMONIC DRIVE		
SW DOCUMENT FILE 872-LM3130.SLDPRT	QUANTITY 2	NEXT ASSY KDM3000		

8 7 6 5 4 3 2 1