

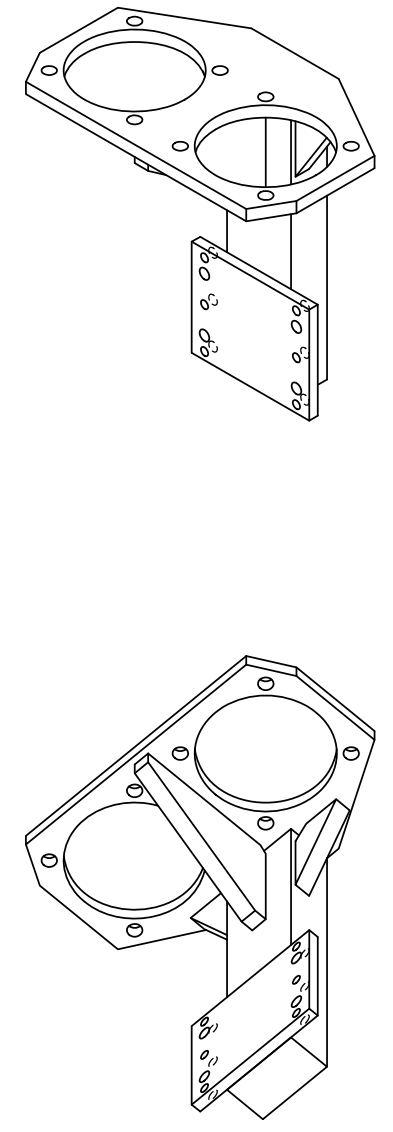
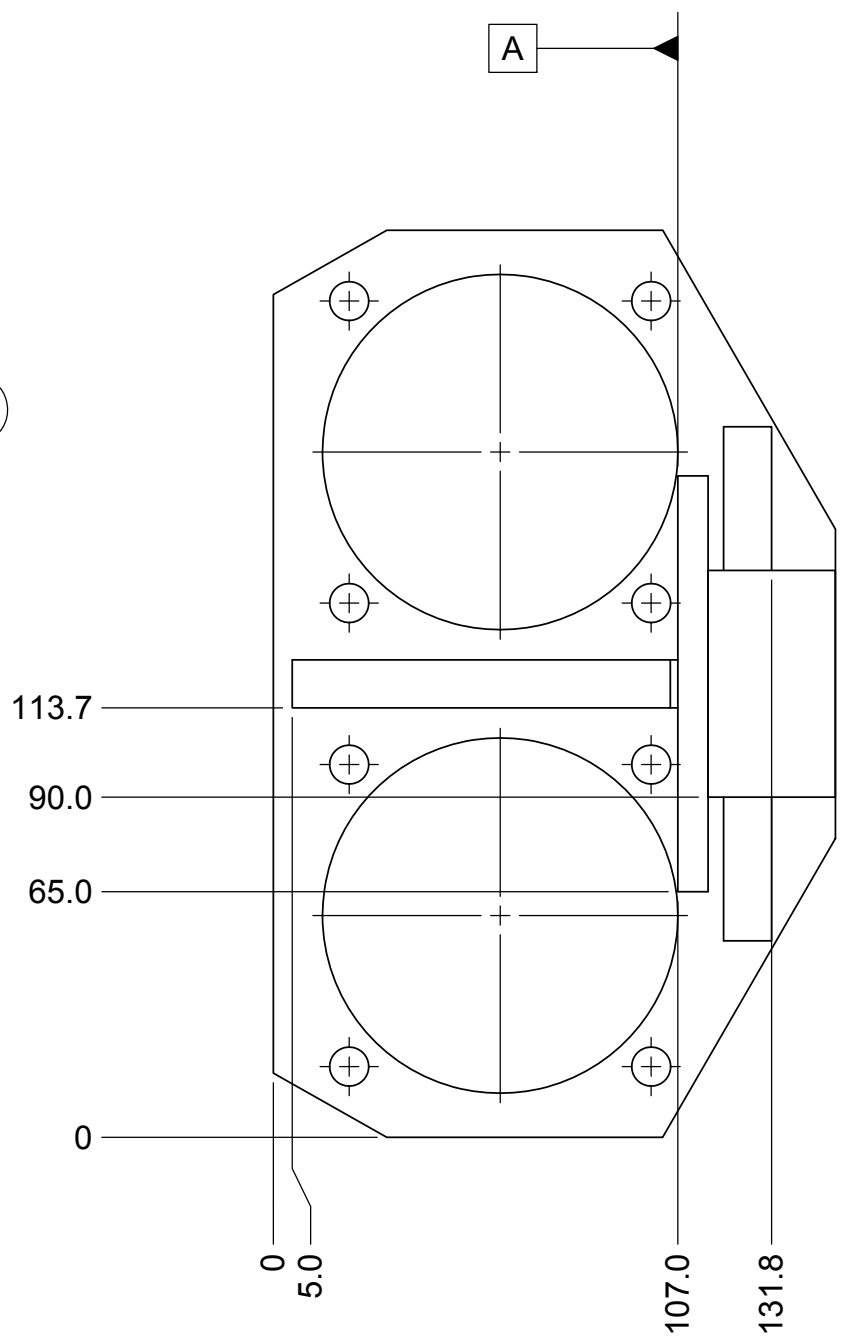
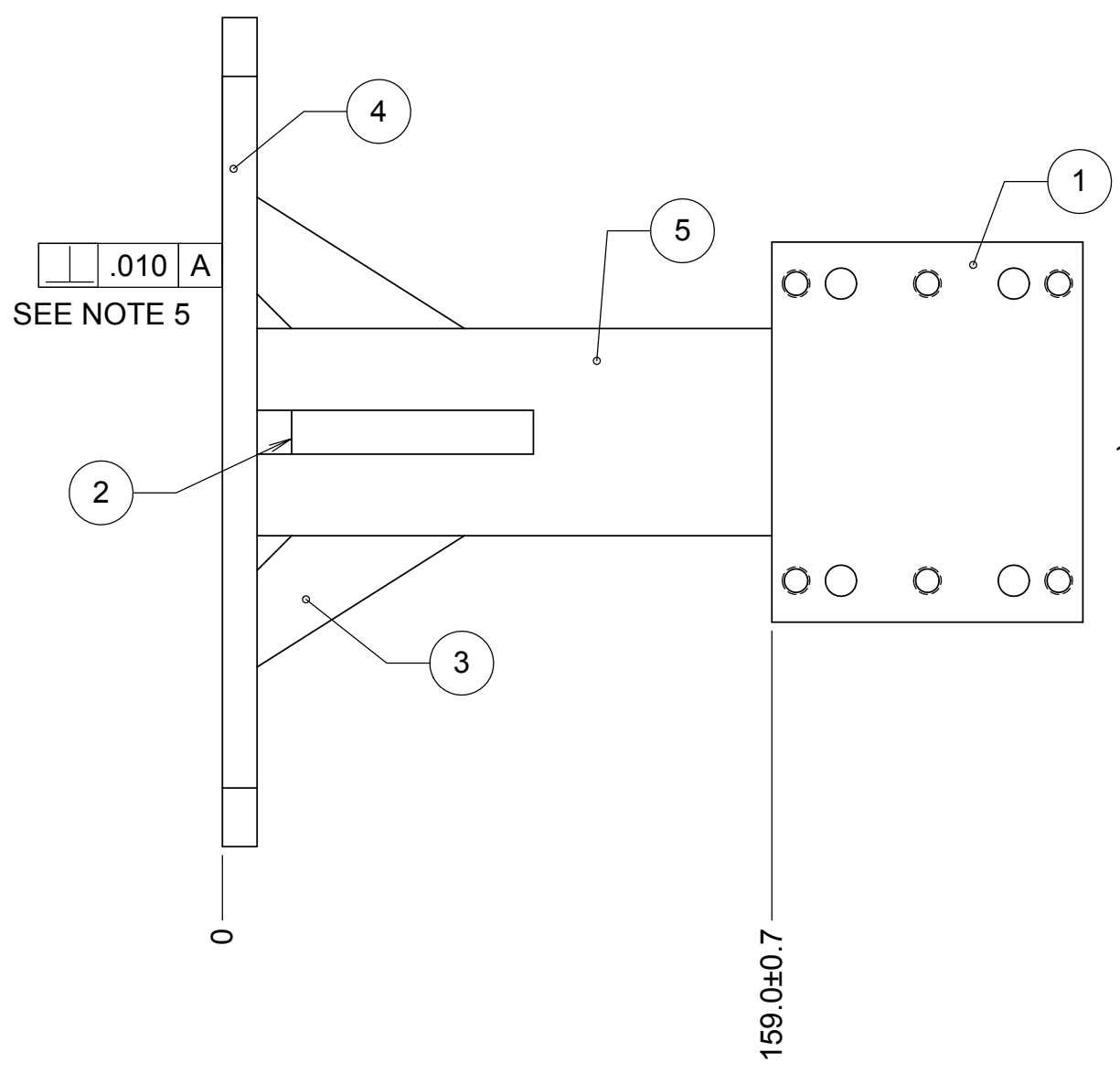
8 7 6 5 4 3 2 1

ITEM NO.	QTY.	PARTNUMBER
1	1	872-LM3131-1
2	1	872-LM3131-2
3	2	872-LM3131-3
4	1	872-LM3131-4
5	1	872-LM3131-5

REVISIONS				
DRWN	DATE	CHK'D	REV	DESCRIPTION
CR	23MAY16		A	PRELIMINARY RELEASE
CR			B	THICKER ITEM 4, PERPENDICULARITY TOLERANCE

D  
C  
B  
A

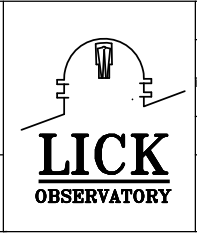
D  
C  
B  
A



- NOTES:
1. GEOMETRIC TOLERANCES AND DIMENSIONS PER ASME Y14.5-2009
  2. MATERIAL: AISI-4130
  3. BREAK ALL SHARP EDGES
  4. 3-5MM FILLET WELDS AT ALL INTERFACES USING BEST KNOWN PRACTICES
  5. MACHINE AFTER WELDING IF NEEDED TO ACHIEVE PERPENDICULARITY

UNLESS OTHERWISE NOTED DIMENSIONS ARE IN MILLIMETERS & TOLERANCES ARE AS FOLLOWS:  
 X.X: ±0.10 mm X.XX: ±0.01 mm  
 ANGLES: ±0.5° FINISH: 3 MICRONS (µm)  
 BREAK ALL SHARP EDGES & CORNERS .25mm MAX

MATERIAL	FINISH
SEE NOTE 2	--

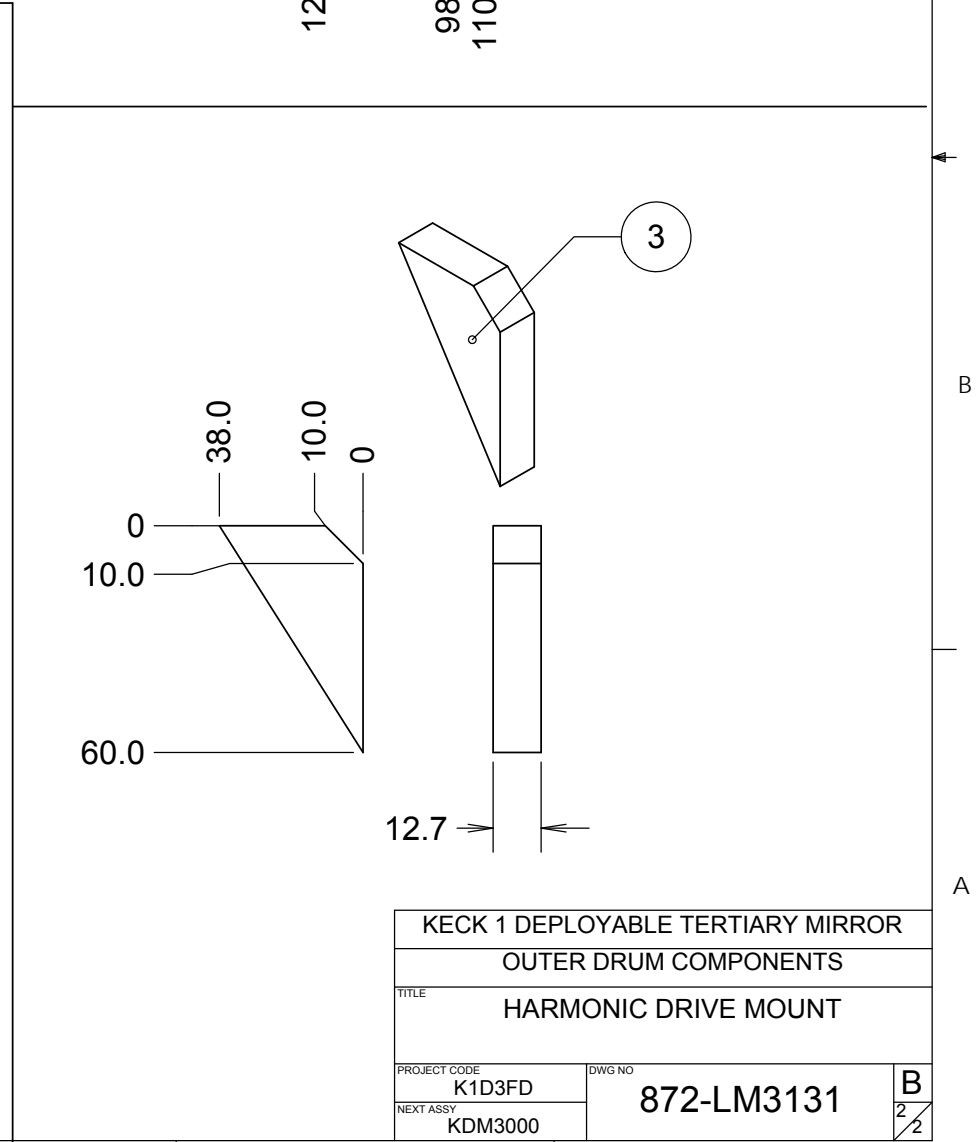
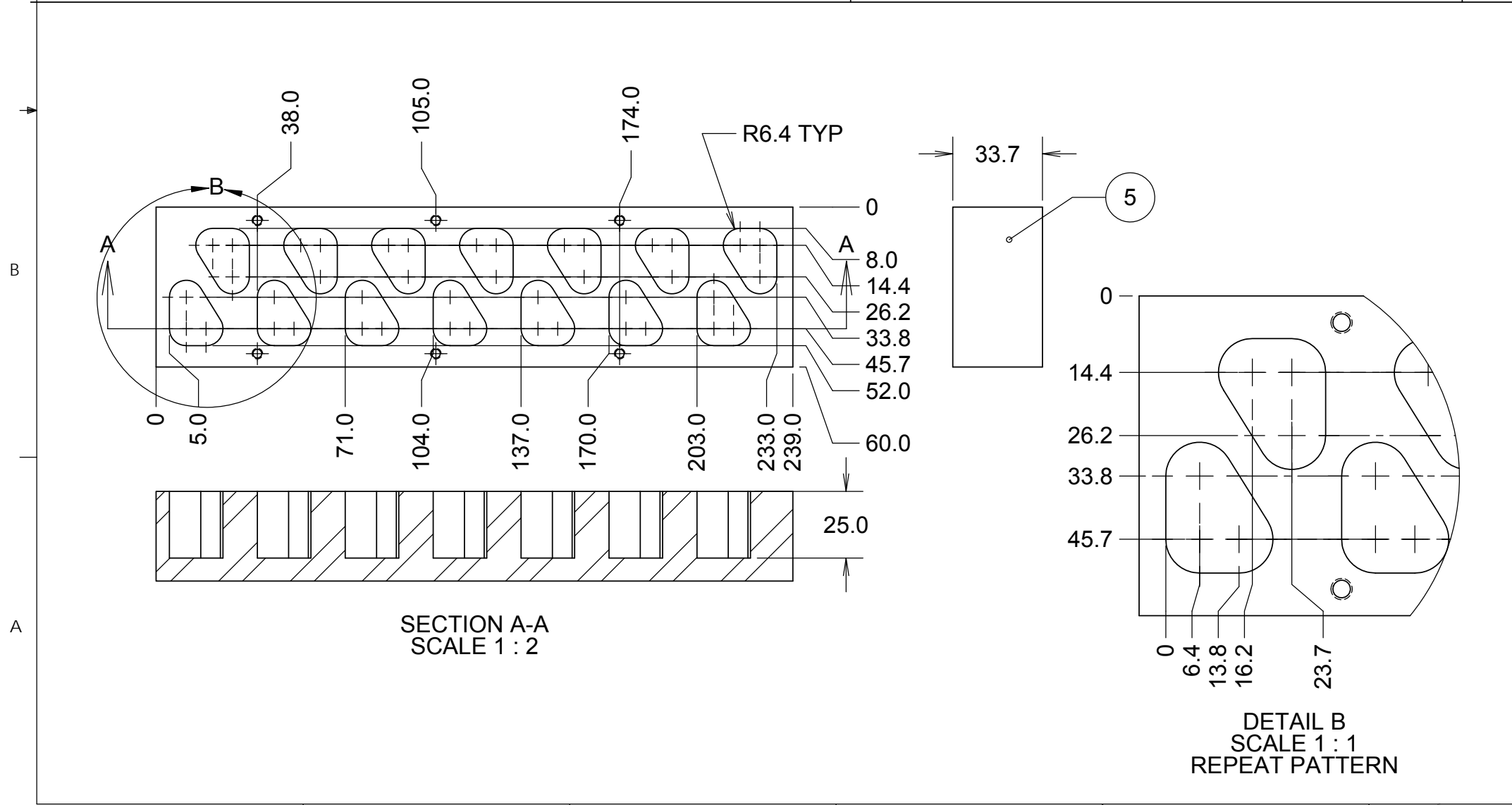
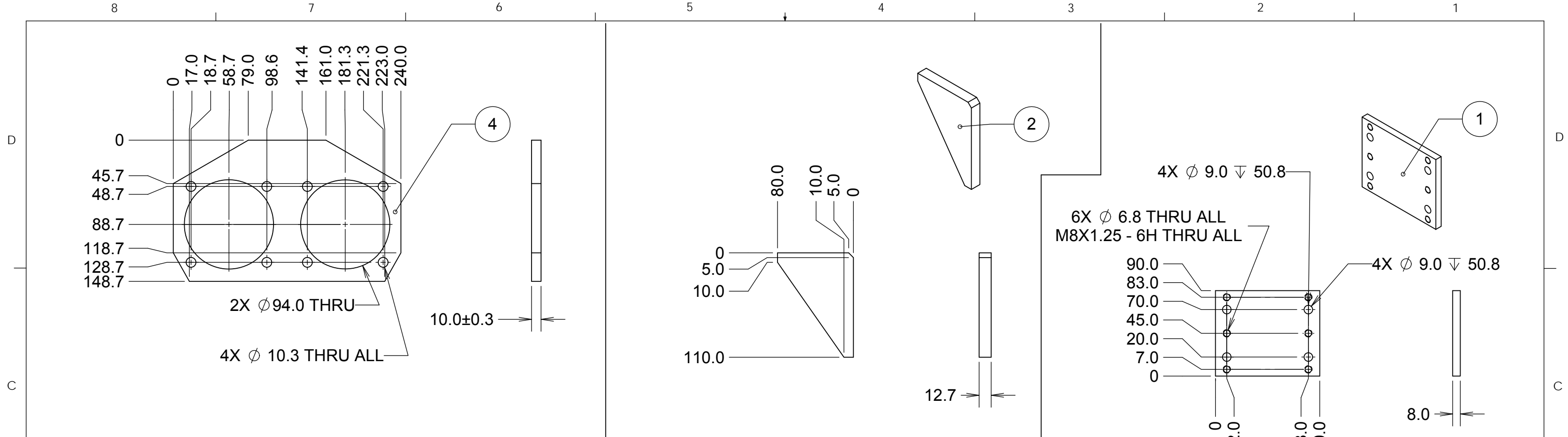


DRAWN	C. RATLIFF
CHECKED	J. WARD
DESIGNED	C. RATLIFF 5/31/16
ENGINEER	C. RATLIFF 5/31/16
SW DOCUMENT FILE	872-LM3131.SLDPART
QUANTITY	1

PROJECT CODE		DWG NO	
872-LM3131		KDM3000	
TITLE		REV	
HARMONIC DRIVE MOUNT		2	

8 7 6 5 4 3 2 1

872-LM3131\_HARMONIC DRIVE MOUNT



PROJECT CODE		DWG NO	
K1D3FD		872-LM3131	
NEXT ASSY		B	
KDM3000		2/2	